

F&F

F&F Filipowski sp. j.
 Konstantynowska 79/81 95-200 Pabianice
 phone/fax: (+48 42) 215 23 83 / 227 09 71 POLAND
 http://www.fif.com.pl e-mail: fif@fif.com.pl

ELECTRONIC BI-STABLE PULSE RELAY
 with timing switch

BIS-413
24V

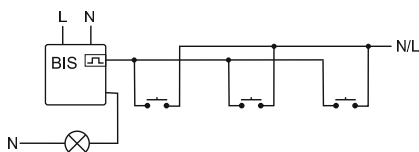
WARRANTY. The F&F products are covered by a warranty of the 24 months from the date of purchase. Effective only with proof of purchase. Contact your dealer or directly with us. More information how to make a complaint can be found on the website: www.fif.com.pl/reklamacje

5 19 0 8 3 1 2 1 5 9 4 0 9 3 1

Do not dispose of this device in the trash along with other waste! According to the Law on Waste, electro coming from households free of charge and can give any amount to up to that end point of collection, as well as to store the occasion of the purchase of new equipment (in accordance with the principle of old-for-new, regardless of brand). Electro thrown in the trash or abandoned in nature, pose a threat to the environment and human health.

PURPOSE

Electronic bi-stable pulse relays BIS-413 24V enables the user to actuate lighting or other devices from various locations by means of control buttons in parallel connection.



- 1 -

FUNCTIONING

The activation of relay is to sign by shine of green LED Connection the receiver - is to sign by shine of red led - by means of a current pulse triggered by pushing any bell push connected to the relay. The relay contact is connect to position 11-12. The receiver is deactivated by another pulse or after a preset time (contact return to position 11-10).

ASSEMBLY

1. Turn OFF the power.
2. Put on the relay on the rail in the switchgear box.
3. Connect the power cable to contact 1-3 with marks.
4. The timers switching which are connect in parallel connect to contact 6 and to cable which is connect to contact 3.
5. The activated receiver connect in series to contact 11-12.

- 2 -

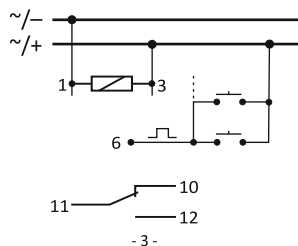
ATTENTION!

The BIS-413 24V is not compatible with bell pushes equipped with fluorescent lamps.

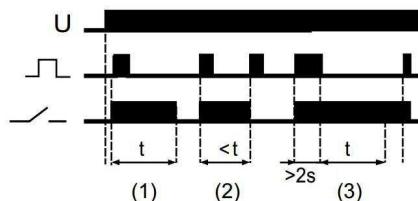
TECHNICAL DATA

power supply	9÷30V AC/DC
contact / load current AC-1	separated 1×NO/NC / <16A
control pulse	9÷30V AC/DC
delay of response	0.1±0.2sec
backup time clock operation - adjustable	1±12min.
power indication	green LED
signalling of activation	red LED
power consumption	
standby	0.15W
on	0.6W
working temperature	-25÷50°C
terminal	2.5mm ² screw terminals
tightening torque	0.4Nm
dimensions	1 module (18mm)
mounting	on the TH-35 rail
ingress protection	IP20

WIRING DIAGRAM



- 3 -



- U - tensiune alimentare
 impuls de comanda
 t - timpul presetat
 contactul de releu (N.O.)